



INSTRUCTIONS FOR USE

ZEPBOUND™ (ZEHP-bownd)
(tirzepatide)
injection, for subcutaneous use



2.5 mg/0.5 mL single-dose pen

5 mg/0.5 mL single-dose pen

7.5 mg/0.5 mL single-dose pen

10 mg/0.5 mL single-dose pen

12.5 mg/0.5 mL single-dose pen

15 mg/0.5 mL single-dose pen use 1 time each week

Important information you need to know before injecting ZEPBOUND

Read this Instructions for Use and the Medication Guide before using your ZEPBOUND pen and each time you get a refill. There may be new information. This information does not take the place of talking to your provider about your medical condition or treatment.

Talk to your provider about how to inject ZEPBOUND the right way.

ZEPBOUND is a single-dose prefilled pen.

ZEPBOUND is used 1 time each week.

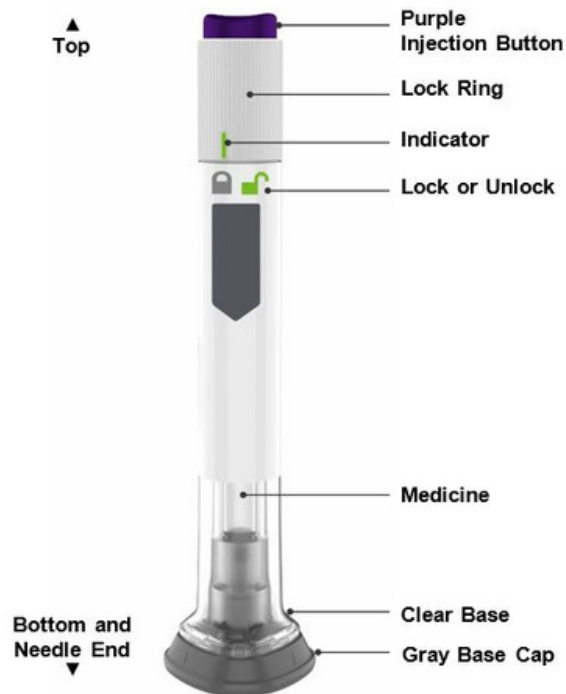
Inject under the skin (subcutaneously) only.

You or another person can inject into your stomach (abdomen) or thigh.

Another person can inject into the back of your upper arm.



GUIDE TO PARTS



PREPARING TO INJECT ZEPBOUND

Remove the pen from the refrigerator.

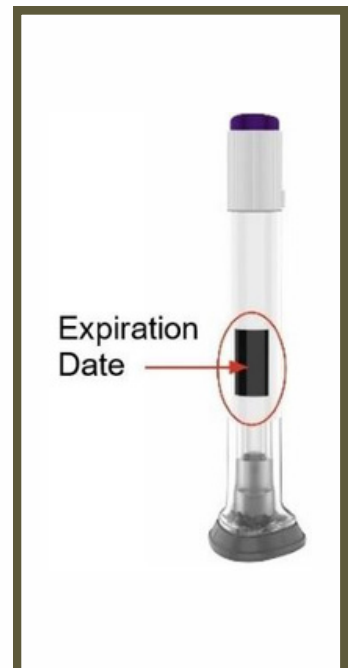
Leave the gray base cap on until you are ready to inject.

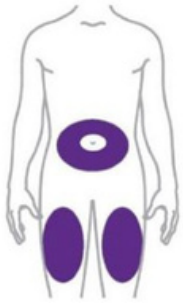
Check the pen label to make sure you have the right medicine and dose, and that it has not expired.

Inspect the pen to make sure that it is not damaged.

Make sure the medicine:

- is not frozen
- is not cloudy
- is colorless to slightly yellow
- does not have particles





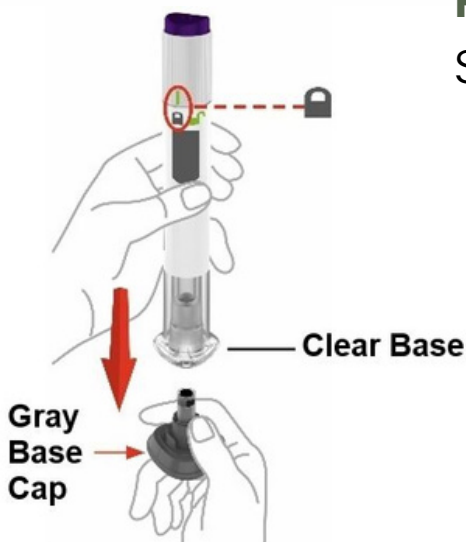
WASH YOUR HANDS & CHOOSE YOUR INJECTION SITE

Step 1

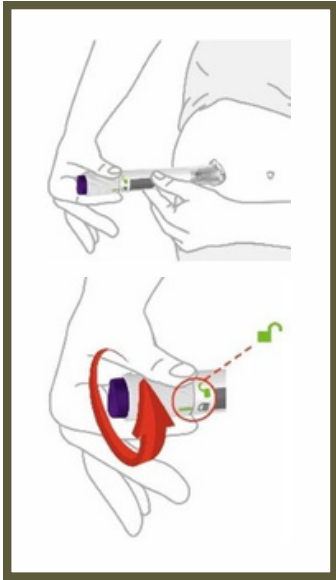
- Your provider can help you choose the injection site that is best for you.
- You or another person can inject the medicine in your stomach (*abdomen*) or thigh.
- Another person should give you the injection in the back of your upper arm.
- Change (*rotate*) your injection site each week.
- You may use the same area of your body but be sure to choose a different injection site in that area.

PULL OFF THE BASE GREY CAP

Step 2



- Make sure the pen is locked.
- Do not unlock the pen until you place the clear base on your skin and are ready to inject.
- **Pull** the gray base cap straight off and throw it away in your household trash.
- **Do not** put the gray base cap back on – this could damage the needle.
- **Do not** touch the needle.



PLACE CLEAR BASE ON SKIN, THEN UNLOCK

Step 3

- Place the clear base flat against your skin at the injection site.
- Unlock by turning the lock ring.



PRESS & HOLD UP TO 10 SECONDS

Step 4

- **Press & hold** the purple injection button for up to 10 seconds.
- **Listen for:**
 - **First Click:** Injection started
 - **Second Click:** Injection completed

DISPOSE OF YOUR USED PEN

Step 5

- After your injection, place the used pen in a **Sharps Container**.



DISPOSING OF YOUR USED PEN

- Put your used pen in an FDA-cleared sharps disposal container right away after use. **Do not** throw away (*dispose of*) pens in your household trash.
- If you do not have an FDA-cleared sharps disposal container, you may use a household container that is:
 - made of a heavy-duty plastic,
 - can be closed with a tight-fitting, puncture-resistant lid, without sharps being able to come out,
 - upright and stable during use,
 - leak-resistant, and
 - properly labeled to warn of hazardous waste inside the container.
- When your sharps disposal container is almost full, you will need to follow your community guidelines for the right way to dispose of your sharps disposal container. There may be state or local laws about how you should throw away used needles and syringes. For more information about safe sharps disposal, and for specific information about sharps disposal in the state that you live in, go to the FDA's website at:

<http://www.fda.gov/safesharpsdisposal>

- **DO NOT** recycle your used sharps disposal container.

For More Information
Regarding Zepbound



www.zepbound.com

STORAGE & HANDLING

- Storage and handling
- Store your pen in the refrigerator between 36°F to 46°F (2°C to 8°C).
- You may store your pen at room temperature up to 86°F (30°C) for up to 21 days. If you store the pen at room temperature, do not return the pen to the refrigerator.
- Discard the pen if not used within 21 days after removing from the refrigerator.
- Do not freeze your pen. If the pen has been frozen, throw the pen away and use a new pen.
- Store your pen in the original carton to protect your pen from light.
- The pen has glass parts. Handle it carefully. If you drop the pen on a hard surface, **do not** use it. Use a new pen for your injection.
- Keep your ZEPBOUND pen and all medicines out of the reach of children.